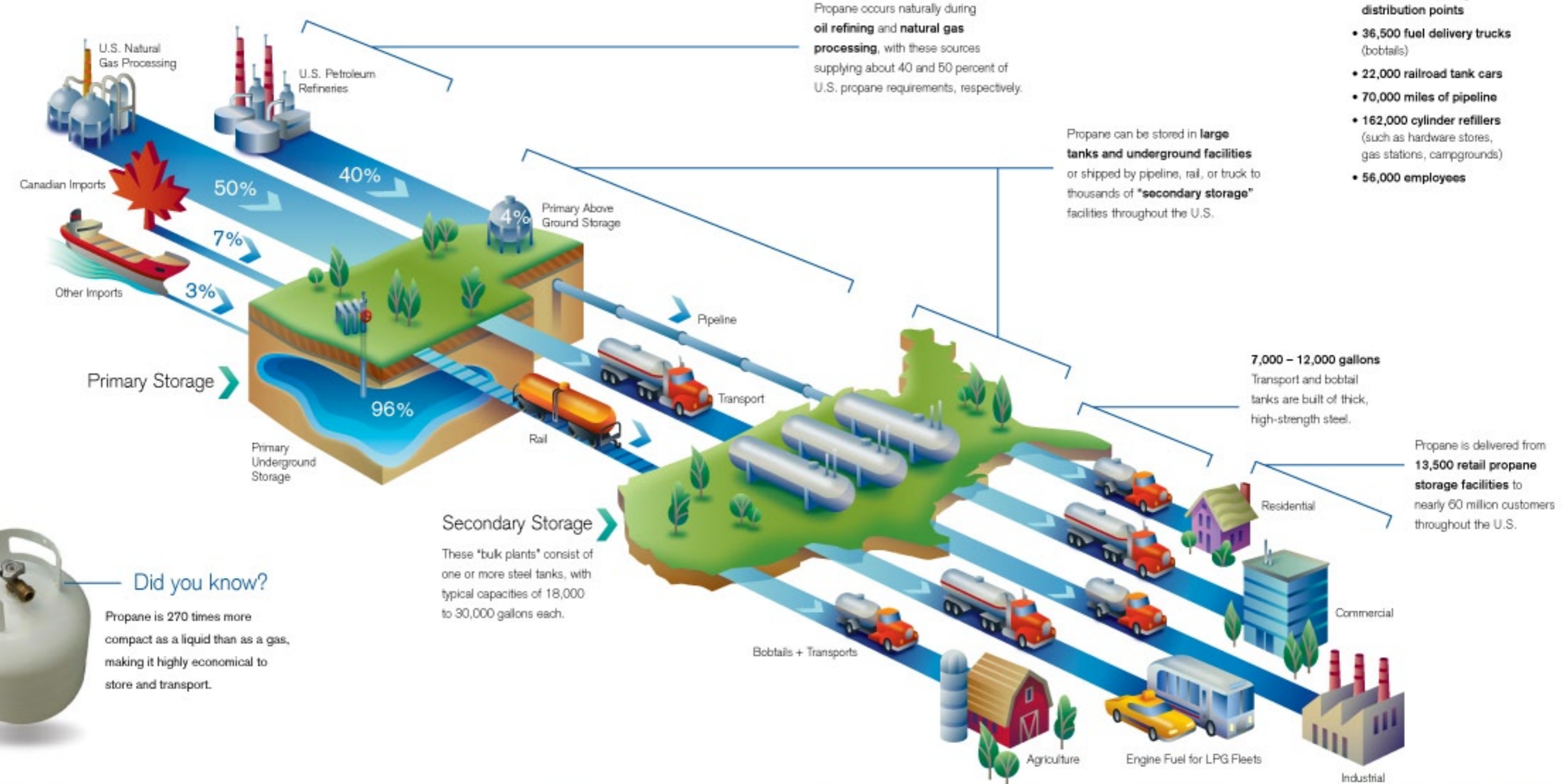


How Propane Gets to Where It's Needed.

The U.S. propane industry has created a vast and safe distribution network to get propane from the source to customer sites. U.S. Department of Transportation regulations and other codes and standards provide for the safe transport of propane on our highways, railroads, and waterways. However propane reaches you, this wide-ranging distribution system means that even if you live far from the natural gas main or power grid, you can be cooking with gas.

Today's Propane Distribution Network.

- 90 barges and tankers
- 6,000 transports
- 13,500 bulk/storage distribution points
- 36,500 fuel delivery trucks (bobtails)
- 22,000 railroad tank cars
- 70,000 miles of pipeline
- 162,000 cylinder refilers (such as hardware stores, gas stations, campgrounds)
- 56,000 employees



Did you know?

Propane is 270 times more compact as a liquid than as a gas, making it highly economical to store and transport.